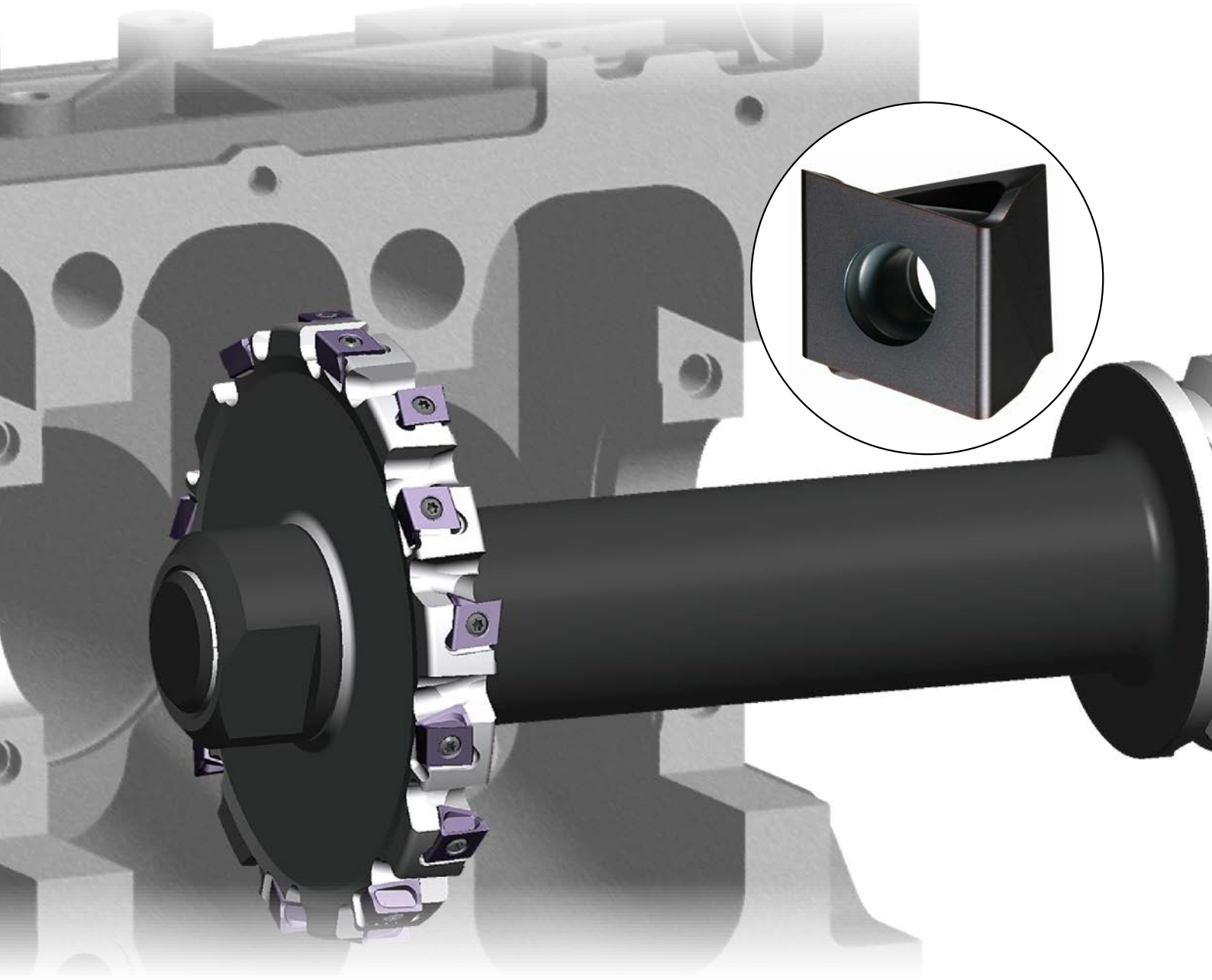

FRESAS DE DISCO PARA RANURAR

PLACAS DE DOBLE CARA, DE 4 CORTES, DE TIPO TANGENCIAL, CON BAJA RESISTENCIA AL CORTE



Mplus...

DCV3 / DCV4 / DCV5

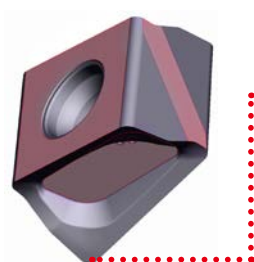
PLACAS INTERCAMBIABLES

DISEÑO ECONÓMICO DE PLACA

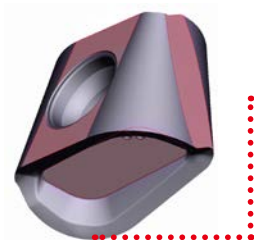
Placa de tipo tangencial con cuatro filos de corte.

SUJECIÓN SEGURA

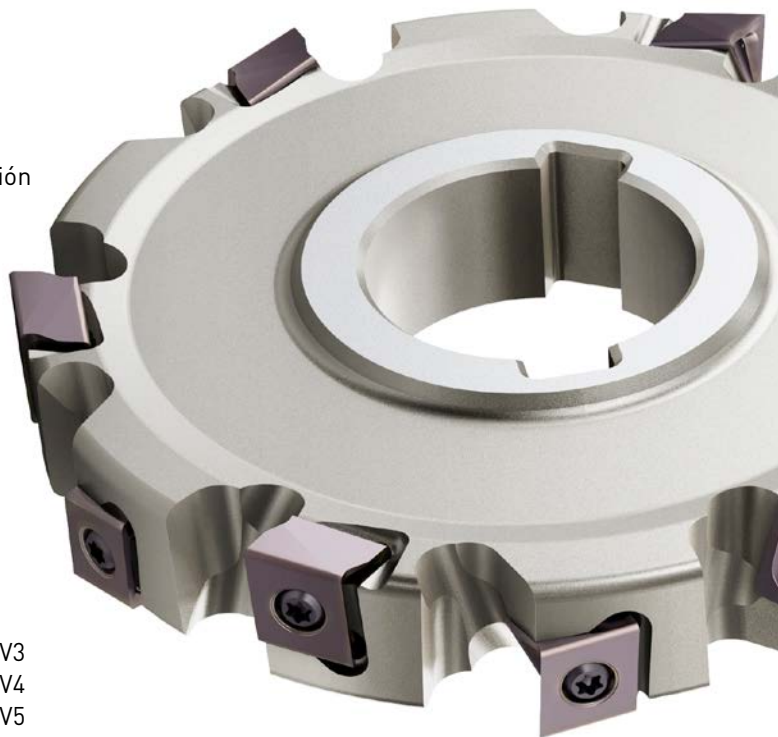
Sus superficies de asiento especiales garantizan una sujeción segura de los distintos tamaños de radio de las placas.



Radio angular R 0.4mm

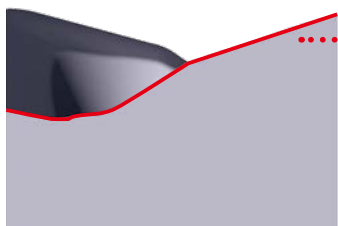


NEW Radio angular R 4.0mm para DCV3
Radio angular R 5.0mm para DCV4
Radio angular R 7.0mm para DCV5

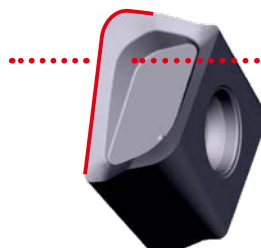


Cuerpo de fresa con placas: GAMF: +8° GAMP: +3°

PLACA CON BAJA RESISTENCIA AL CORTE → GEOMETRÍA MUY AFILADA



Filo de corte resistente
(curva convexa)

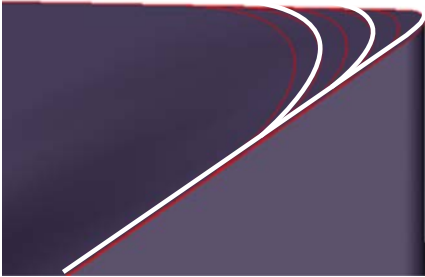


Ángulos de incidencia
helicoidales de doble
fase

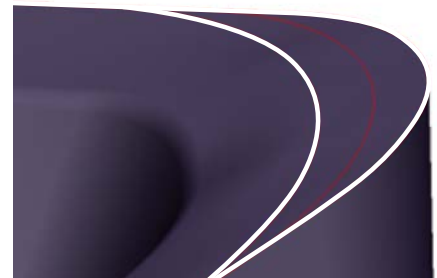
RADIOS ANGULARES DE ALTA PRECISIÓN

PLACAS DE PRECISIÓN PARA CREAR RADIOS ANGULARES PRECISOS EN LA PIEZA DE TRABAJO.

R 0.4 – R 3.0 mm

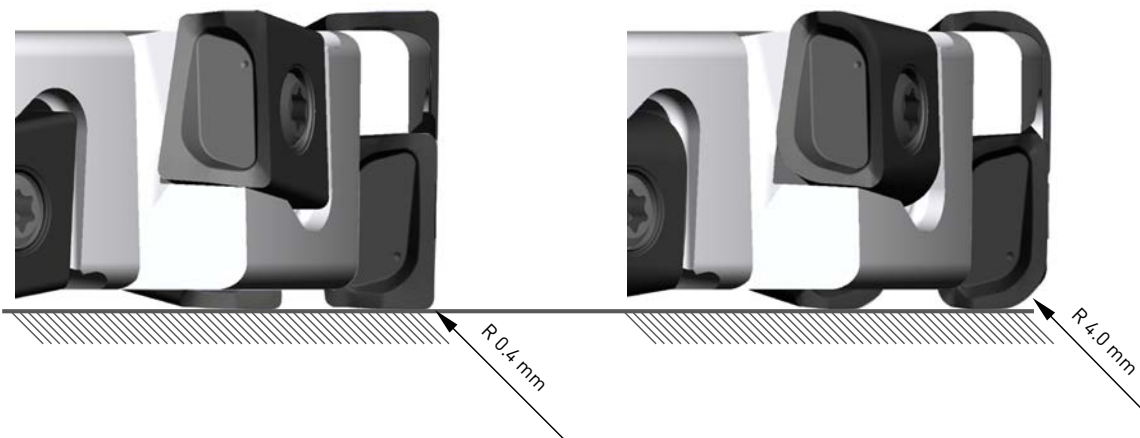


R 3.0 – R 7.0 mm



GEOMETRÍA CONSISTENTE

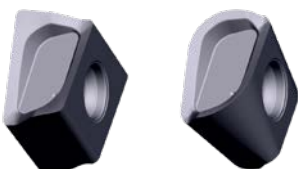
El diámetro y la anchura de corte no cambian, incluso si se utilizan placas con radios angulares diferentes.



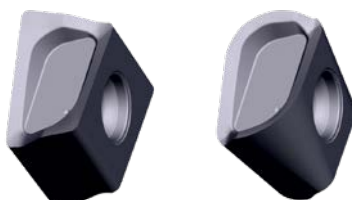
GRAN VARIEDAD DE RADIOS ANGULARES DISPONIBLES

NEW

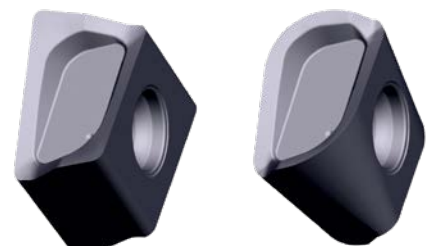
DCV3 = R 0.4 – R 4.0 mm



DCV4 = R 0.4 – R 5.0 mm

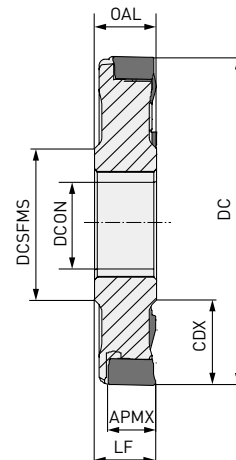
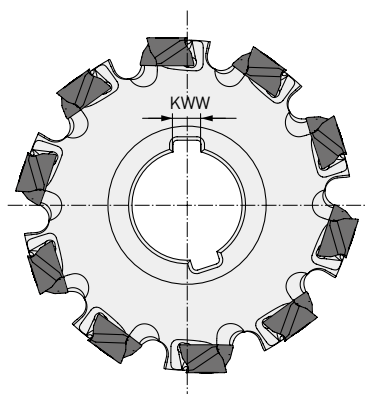


DCV5 = R 0.4 – R 7.0 mm




NEW

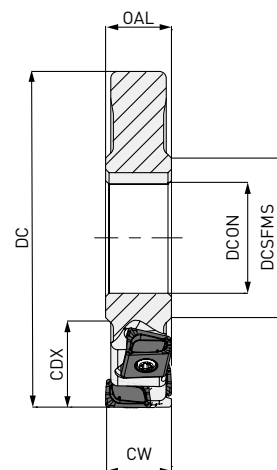
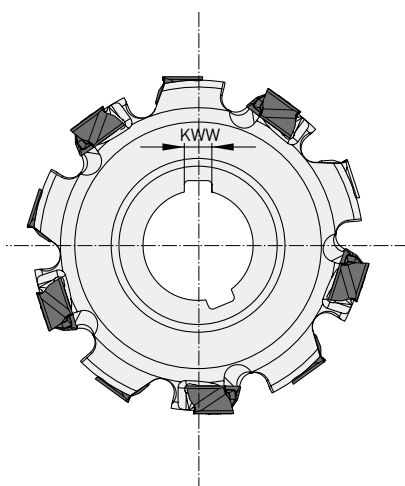
DCV3

**P K**

Max. APMX: 8.6 mm

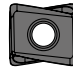
RANURADO LATERAL

DC	ZNF	LF = OAL	CDX	DCON	DCSFMS	KWW	
80 - 99.9	8		20.0	27	40	7	LNGU09
100 - 124.9	10	≥12	27.0	32	46	8	
125 - 160.0	12		35.0	40	55	10	

15 

Anchura máxima CW: 17.2 mm

RANURADO TOTAL

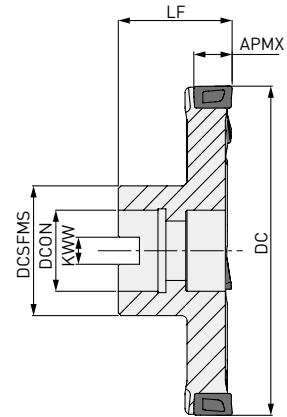
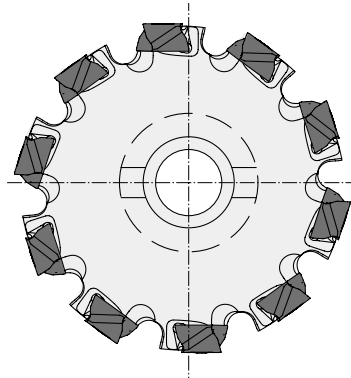
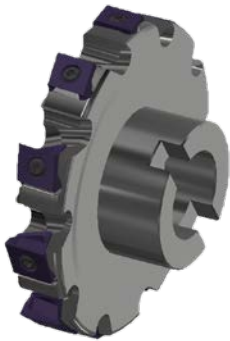
DC	ZNF	ZNP	LF = OAL	CW	CDX	DCON	DCSFMS	KWW	
80 - 99.9	4	8		12-17.2	20.0	27	40	7	LNGU09
100 - 124.9	5	10	≥12	12-17.2	27.0	32	46	8	
125 - 160.0	6	12		12-17.2	35.0	40	55	10	

1. Diseños multinivel disponibles para cada tamaño. Por favor, contacte con nuestro departamento comercial (Mitsubishi Materials España - comercial@mmevalencia.es) para obtener más información sobre cualquier geometría que no se muestre en el catálogo.

15 


NEW*Mplus...*

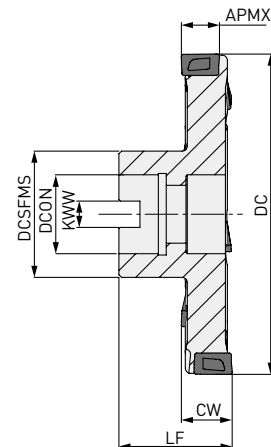
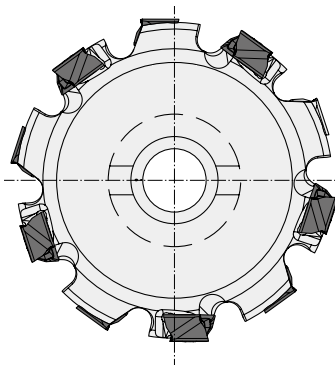
DCV3

**P** **K**

Max. APMX: 8.6 mm


RANURADO LATERAL

DC	ZEFP	LF	CDX	DCON	DCSFMS	KWW	
80 - 99.9	8	50	20.0	27	40	12.4	LNGU09
100 - 124.9	10	60	27.0	32	46	14.4	
125 - 160.0	12	60	35.0	40	55	16.4	

15 

Anchura máxima CW: 17.2 mm

RANURADO TOTAL




DC	ZEFP	LF	CW	CDX	DCON	DCSFMS	KWW	
80 - 99.9	8	50	12-17.2	20.0	27	40	12.4	LNGU09
100 - 124.9	10	60	12-17.2	27.0	32	46	14.4	
125 - 160.0	12	60	12-17.2	35.0	40	55	16.4	

1. Diseños multinivel disponibles para cada tamaño. Por favor, contacte con nuestro departamento comercial (Mitsubishi Materials España - comercial@mmevalencia.es) para obtener más información sobre cualquier geometría que no se muestre en el catálogo.


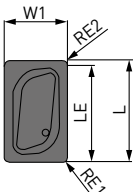
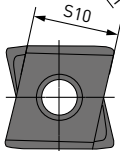
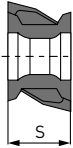
15 

DCV3

PIEZAS DE REPUESTO

Tipo de portaherramientas		TQ (Nm)		
	Tornillo de fijación	Par de fijación	Llave	Lubricante
DCV3 LNGU090600PNEOM	TS304	1.5	TKY08W	MK1KS

PLACA

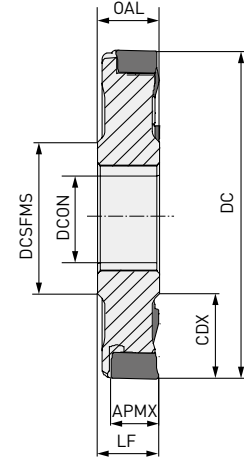
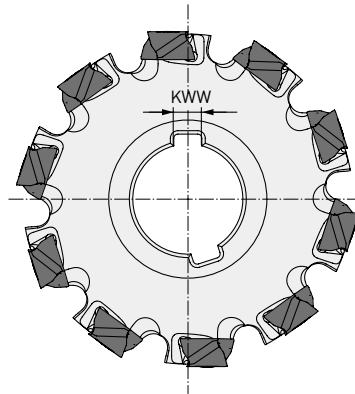
Referencia	VP15TF	Mano	Clase	Honing	L	LE	S	S10	RE1	W1	Forma	Geometría	
NEW LNGU090604PNER-M	●	R	G	E	9	8.6	6	8.5	0.4	6			
NEW LNGU090608PNER-M	●	R	G	E	9	8.6	6	8.5	0.8	6			
NEW LNGU090612PNER-M	●	R	G	E	9	8.6	6	8.5	1.2	6			
NEW LNGU090616PNER-M	●	R	G	E	9	8.6	6	8.5	1.6	6			
NEW LNGU090620PNER-M	●	R	G	E	9	8.6	6	8.5	2	6			
NEW LNGU090624PNER-M	●	R	G	E	9	8.6	6	8.5	2.4	6			
NEW LNGU090630PNER-M	●	R	G	E	9	8.6	6	8.5	3	6			
NEW LNGU090640PNER-M	●	R	G	E	9	8.6	6	8.5	4	6			
NEW LNGU090604PNEL-M	●	L	G	E	9	8.6	6	8.5	0.4	6			
NEW LNGU090608PNEL-M	●	L	G	E	9	8.6	6	8.5	0.8	6			
NEW LNGU090612PNEL-M	●	L	G	E	9	8.6	6	8.5	1.2	6			
NEW LNGU090616PNEL-M	●	L	G	E	9	8.6	6	8.5	1.6	6			
NEW LNGU090620PNEL-M	●	L	G	E	9	8.6	6	8.5	2	6			
NEW LNGU090624PNEL-M	●	L	G	E	9	8.6	6	8.5	2.4	6			
NEW LNGU090630PNEL-M	●	L	G	E	9	8.6	6	8.5	3	6			
NEW LNGU090640PNEL-M	●	L	G	E	9	8.6	6	8.5	4	6			
NEW LNGU090604PNEL-M	●	L	G	E	9	8.6	6	8.5	0.4	6			
NEW LNGU090608PNEL-M	●	L	G	E	9	8.6	6	8.5	0.8	6			

(10 placas por caja)

DCV4




P K

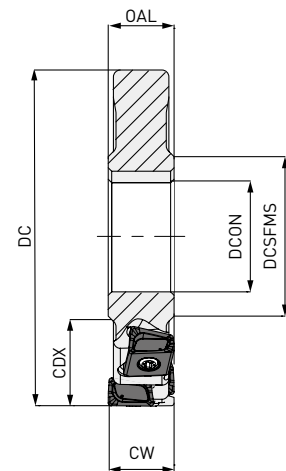
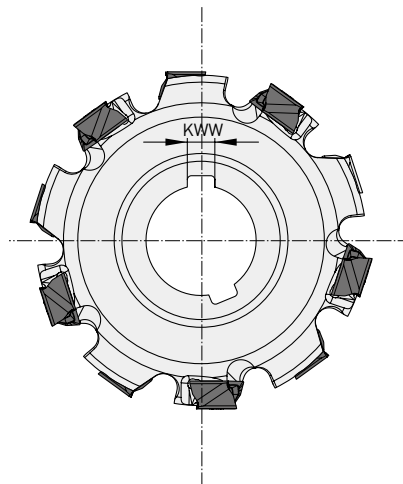


Max. APMX: RE1 < 3.0 mm 12.2 mm
RE1 > 3.0 mm 11.4 mm

RANURADO LATERAL


DC	ZEFP	LF = OAL	CDX	DCON	DCSFMS	KWW	
80 - 99.9	8	18	20.0	27	40	7	LNGU13
100 - 124.9	10		27.0	32	46	8	
125 - 159.9	12		35.0	40	55	10	
160 - 200	14		52.5	40	55	10	

15 



Anchura máxima CW: 24 mm

RANURADO TOTAL

DC	ZEFP	CW	CDX	DCON	DCSFMS	KWW	
80 - 99.9	4	18-24	20.0	27	40	7	LNGU13
100 - 124.9	5	18-24	27.0	32	46	8	
125 - 159.9	6	18-24	35.0	40	55	10	
160 - 200	7	18-24	52.5	40	55	10	

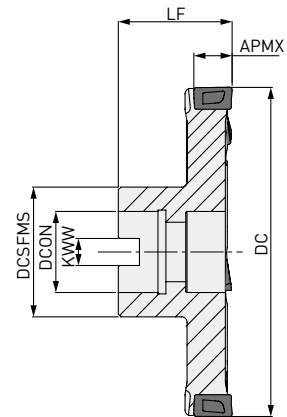
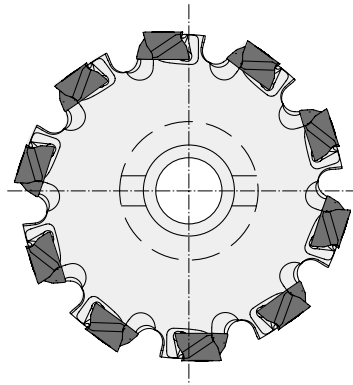
1. Diseños multinivel disponibles para cada tamaño. Por favor, contacte con nuestro departamento comercial (Mitsubishi Materials España - comercial@mmevalencia.es) para obtener más información sobre cualquier geometría que no se muestre en el catálogo.

15 

DCV4




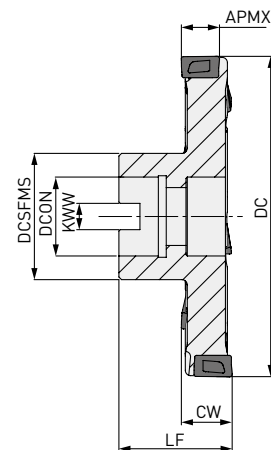
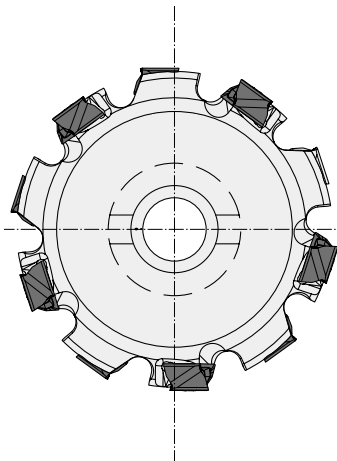
P K



Max. APMX: RE1 < 3.0 mm 12.2 mm
RE1 > 3.0 mm 11.4 mm

RANURADO LATERAL


DC	ZEFP	LF	CDX	DCON	DCSFMS	KWW	
80 - 99.9	8 - 10	50	20	27	40	12.4	LNGU13
100 - 124.9	10 - 12	60	27	32	46	14.4	
125 - 159.9	12 - 14	60	35	40	55	16.4	
160 - 200	14 - 20	70	52.5	40	55	16.4	



15 

Anchura máxima CW: 24 mm

RANURADO TOTAL




DC	ZEFP	LF	CW	CDX	DCON	DCSFMS	KWW	
80 - 99.9	8 - 10	50	18-24	20	27	40	12.4	LNGU13
100 - 124.9	10 - 12	60	18-24	27	32	46	14.4	
125 - 159.9	12 - 14	60	18-24	35	40	55	16.4	
160 - 200	14 - 20	70	18-24	52.5	40	55	16.4	

1. Diseños multinivel disponibles para cada tamaño. Por favor, contacte con nuestro departamento comercial (Mitsubishi Materials España - comercial@mmvalencia.es) para obtener más información sobre cualquier geometría que no se muestre en el catálogo.


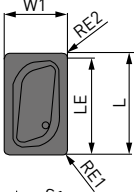
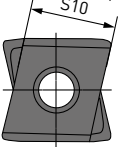

15 

DCV4

PIEZAS DE REPUESTO

Tipo de portaherramientas	 Tornillo de fijación	TQ (Nm)	 Llave	 Lubricante
DCV4 LNGU13080PNEO	TS406	3.5	TKY15T	MK1KS

PLACA

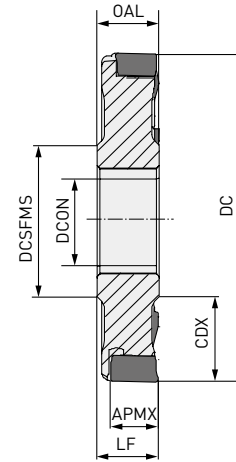
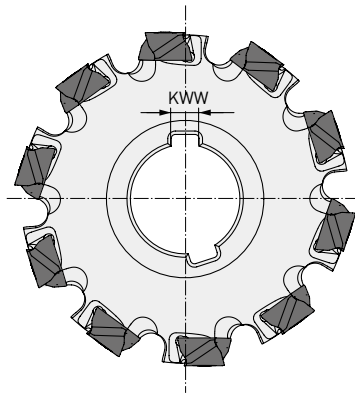
Referencia	MP6120 VP15TF	Mano	Clase	Honing	L	LE	S	S10	RE1	RE2	W1	Forma	Geometría
LNGU130804PNER-M	●	R	G	E	13.0	12.2	8.0	11.0	0.4	0.8	8.0	   	
LNGU130804PNEL-M	●	L	G	E	13.0	12.2	8.0	11.0	0.4	0.8	8.0		
LNGU130808PNER-M	●	R	G	E	13.0	12.2	8.0	11.0	0.8	0.8	8.0		
LNGU130808PNEL-M	●	L	G	E	13.0	12.2	8.0	11.0	0.8	0.8	8.0		
LNGU130812PNER-M	●	R	G	E	13.0	12.2	8.0	11.0	1.2	0.8	8.0		
LNGU130812PNEL-M	●	L	G	E	13.0	12.2	8.0	11.0	1.2	0.8	8.0		
LNGU130816PNER-M	●	R	G	E	13.0	12.2	8.0	11.0	1.6	0.8	8.0		
LNGU130816PNEL-M	●	L	G	E	13.0	12.2	8.0	11.0	1.6	0.8	8.0		
LNGU130820PNER-M	●	R	G	E	13.0	12.2	8.0	11.0	2.0	0.8	8.0		
LNGU130820PNEL-M	●	L	G	E	13.0	12.2	8.0	11.0	2.0	0.8	8.0		
LNGU130824PNER-M	●	R	G	E	13.0	12.2	8.0	11.0	2.4	0.8	8.0		
LNGU130824PNEL-M	●	L	G	E	13.0	12.2	8.0	11.0	2.4	0.8	8.0		
LNGU130830PNER-M	●	R	G	E	13.0	11.4	8.0	11.0	3.0	1.6	8.0		
LNGU130830PNEL-M	●	L	G	E	13.0	11.4	8.0	11.0	3.0	1.6	8.0		
LNGU130840PNER-M	●	R	G	E	13.0	11.4	8.0	11.0	4.0	1.6	8.0		
LNGU130840PNEL-M	●	L	G	E	13.0	11.4	8.0	11.0	4.0	1.6	8.0		
LNGU130850PNER-M	●	R	G	E	13.0	11.4	8.0	11.0	5.0	1.6	8.0		
LNGU130850PNEL-M	●	L	G	E	13.0	11.4	8.0	11.0	5.0	1.6	8.0		
LNGU130804PNER-R	●	R	G	E	13.0	12.2	8.0	11.0	0.4	0.8	8.0		
LNGU130804PNEL-R	●	L	G	E	13.0	12.2	8.0	11.0	0.4	0.8	8.0		
LNGU130808PNER-R	●	R	G	E	13.0	12.2	8.0	11.0	0.8	0.8	8.0		
LNGU130808PNEL-R	●	L	G	E	13.0	12.2	8.0	11.0	0.8	0.8	8.0		
LNGU130812PNER-R	●	R	G	E	13.0	12.2	8.0	11.0	1.2	0.8	8.0		
LNGU130812PNEL-R	●	L	G	E	13.0	12.2	8.0	11.0	1.2	0.8	8.0		
LNGU130816PNER-R	●	R	G	E	13.0	12.2	8.0	11.0	1.6	0.8	8.0		
LNGU130816PNEL-R	●	L	G	E	13.0	12.2	8.0	11.0	1.6	0.8	8.0		
LNGU130820PNER-R	●	R	G	E	13.0	12.2	8.0	11.0	2.0	0.8	8.0		
LNGU130820PNEL-R	●	L	G	E	13.0	12.2	8.0	11.0	2.0	0.8	8.0		
LNGU130824PNER-R	●	R	G	E	13.0	12.2	8.0	11.0	2.4	0.8	8.0		
LNGU130824PNEL-R	●	L	G	E	13.0	12.2	8.0	11.0	2.4	0.8	8.0		
LNGU130830PNER-R	●	R	G	E	13.0	11.4	8.0	11.0	3.0	1.6	8.0		
LNGU130830PNEL-R	●	L	G	E	13.0	11.4	8.0	11.0	3.0	1.6	8.0		
LNGU130840PNER-R	●	R	G	E	13.0	11.4	8.0	11.0	4.0	1.6	8.0		
LNGU130840PNEL-R	●	L	G	E	13.0	11.4	8.0	11.0	4.0	1.6	8.0		
LNGU130850PNER-R	●	R	G	E	13.0	11.4	8.0	11.0	5.0	1.6	8.0		
LNGU130850PNEL-R	●	L	G	E	13.0	11.4	8.0	11.0	5.0	1.6	8.0		

(10 placas por caja)

DCV5




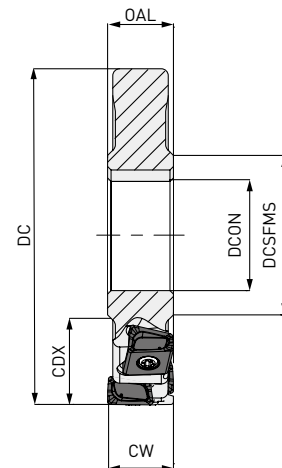
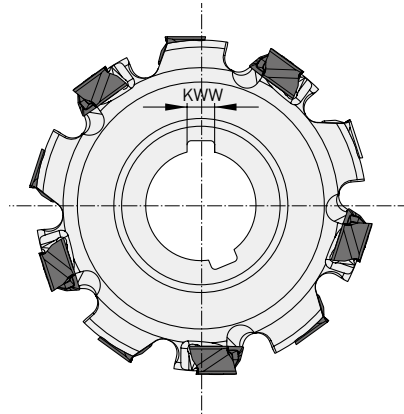
P K



Max. APMX: RE1 < 3.0 mm 16.2 mm
RE1 > 3.0 mm 15.4 mm


RANURADO LATERAL

DC	ZEFP	LF = OAL	CDX	DCON	DCSFMS	KWW	
100 - 124.9	8	23	27.0	32	46	8	LNGU17
125 - 159.9	10		35.0	40	55	10	
160 - 199.9	12		52.5	40	55	10	
200 - 250	16		65.0	50	70	12	



Anchura máxima CW: 32 mm

RANURADO TOTAL

DC	ZEFP	CW	CDX	DCON	DCSFMS	KWW	
100 - 124.9	8	23-32	27.0	32	46	8	LNGU17
125 - 159.9	10		35.0	40	55	10	
160 - 199.9	12		52.5	40	55	10	
200 - 250	16		65.0	50	70	12	

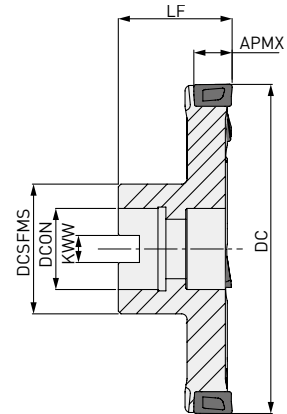
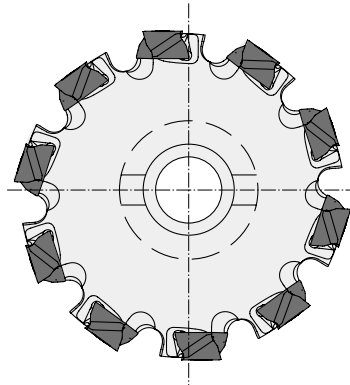
1. Diseños multinivel disponibles para cada tamaño. Por favor, contacte con nuestro departamento comercial (Mitsubishi Materials España - comercial@mmevalencia.es) para obtener más información sobre cualquier geometría que no se muestre en el catálogo.



DCV5




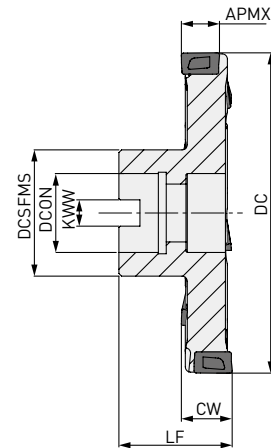
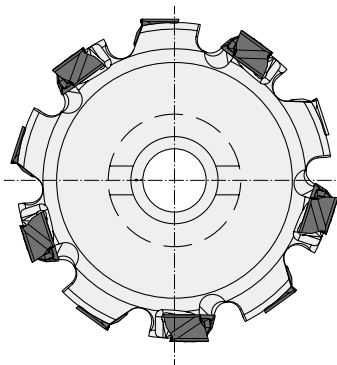
P K



Max. APMX: RE1 < 3.0 mm 16.2 mm
RE1 > 3.0 mm 15.4 mm


RANURADO LATERAL

DC	ZEFP	LF	CDX	DCON	DCSFMS	KWW	
100 - 124.9	8 - 10	50	27	32	46	14.4	LNGU17
125 - 159.9	10 - 12	60	35	40	55	16.4	
160 - 199.9	12 - 14	60	52.5	40	55	16.4	
200 - 250	14 - 20	70	65	40	70	16.4	



Anchura máxima CW: 32 mm




RANURADO TOTAL

DC	ZEFP	LF	CW	CDX	DCON	DCSFMS	KWW	
100 - 124.9	8 - 10	60	23-32	27	32	46	14.4	LNGU17
125 - 159.9	10 - 12	60		35	40	55	16.4	
160 - 199.9	12 - 14	70		52.5	40	55	16.4	
200 - 250.0	14 - 20	70		65	40	70	16.4	

1. Diseños multinivel disponibles para cada tamaño. Por favor, contacte con nuestro departamento comercial (Mitsubishi Materials España - comercial@mmevalencia.es) para obtener más información sobre cualquier geometría que no se muestre en el catálogo.

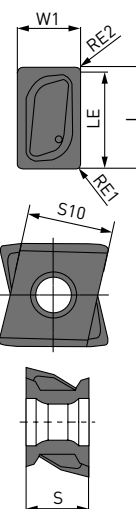
DCV5

PIEZAS DE REPUESTO

Tipo de portaherramientas		TQ (Nm)		
	Tornillo de fijación	Par de fijación	Llave	Lubricante
DCV5 LNGU17100PNEOR	TS53	7.5	TKY25T	MK1KS

PLACA

Referencia	MP6120	VP15TF	Mano	Clase	Honing	L	LE	S	S10	RE1	RE2	W1	D1	Forma	Geometría
LNGU171004PNER-R	●	●	R	G	E	17.0	16.2	10.0	13.0	0.4	0.8	10.0	5.5		
LNGU171004PNEL-R	●	●	L	G	E	17.0	16.2	10.0	13.0	0.4	0.8	10.0	5.5		
LNGU171008PNER-R	●	●	R	G	E	17.0	16.2	10.0	13.0	0.8	0.8	10.0	5.5		
LNGU171008PNEL-R	●	●	L	G	E	17.0	16.2	10.0	13.0	0.8	0.8	10.0	5.5		
LNGU171012PNER-R	●	●	R	G	E	17.0	16.2	10.0	13.0	1.2	0.8	10.0	5.5		
LNGU171012PNEL-R	●	●	L	G	E	17.0	16.2	10.0	13.0	1.2	0.8	10.0	5.5		
LNGU171016PNER-R	●	●	R	G	E	17.0	16.2	10.0	13.0	1.6	0.8	10.0	5.5		
LNGU171016PNEL-R	●	●	L	G	E	17.0	16.2	10.0	13.0	1.6	0.8	10.0	5.5		
LNGU171020PNER-R	●	●	R	G	E	17.0	16.2	10.0	13.0	2.0	0.8	10.0	5.5		
LNGU171020PNEL-R	●	●	L	G	E	17.0	16.2	10.0	13.0	2.0	0.8	10.0	5.5		
LNGU171024PNER-R	●	●	R	G	E	17.0	16.2	10.0	13.0	2.4	0.8	10.0	5.5		
LNGU171024PNEL-R	●	●	L	G	E	17.0	16.2	10.0	13.0	2.4	0.8	10.0	5.5		
LNGU171030PNER-R	●	●	R	G	E	17.0	15.4	10.0	13.0	3.0	1.6	10.0	5.5		
LNGU171030PNEL-R	●	●	L	G	E	17.0	15.4	10.0	13.0	3.0	1.6	10.0	5.5		
LNGU171040PNER-R	●	●	R	G	E	17.0	15.4	10.0	13.0	4.0	1.6	10.0	5.5		
LNGU171040PNEL-R	●	●	L	G	E	17.0	15.4	10.0	13.0	4.0	1.6	10.0	5.5		
LNGU171050PNER-R	●	●	R	G	E	17.0	15.4	10.0	13.0	5.0	1.6	10.0	5.5		
LNGU171050PNEL-R	●	●	L	G	E	17.0	15.4	10.0	13.0	5.0	1.6	10.0	5.5		
LNGU171060PNER-R	●	●	R	G	E	17.0	15.4	10.0	13.0	6.0	1.6	10.0	5.5		
LNGU171060PNEL-R	●	●	L	G	E	17.0	15.4	10.0	13.0	6.0	1.6	10.0	5.5		
LNGU171070PNER-R	●	●	R	G	E	17.0	15.4	10.0	13.0	7.0	1.6	10.0	5.5		
LNGU171070PNEL-R	●	●	L	G	E	17.0	15.4	10.0	13.0	7.0	1.6	10.0	5.5		

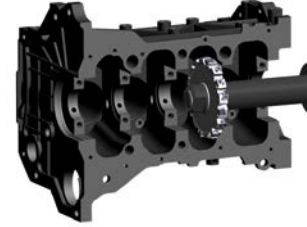


(10 placas por caja)

EJEMPLOS DE APLICACIÓN

Herramienta	DCV4 Ø 300 mm	DCV4 Ø 160 mm
Placa (calidad)	LNGU130804PNER-M (VP15TF)	LNGU130804PNER-M (VP15TF)
	Pinza de freno (DIN GGG40.3)	Bloque de cilindros (DIN GG25)

Pieza de trabajo



n (min ⁻¹)	120	500
Vc (m/min)	113	201
fz (mm/d.)	0.09-0.24	0.14
Vf (mm/min)	150-400	500
ap (mm)	1.0-2.0	1.0
Tipo de corte	Corte en seco	Corte en seco
Máquina	Centro de mecanizado	Horizontal

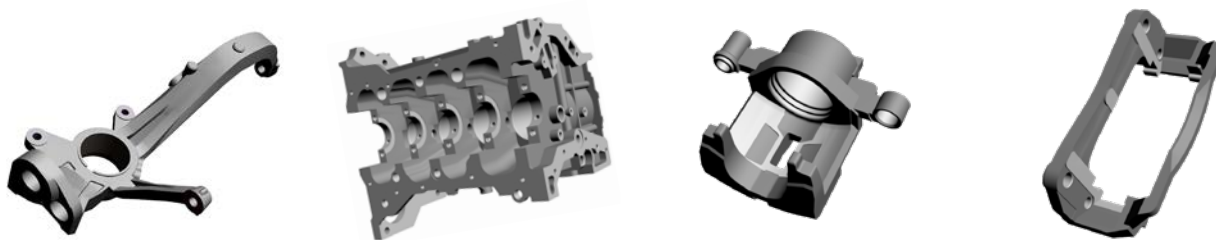
Resultados

Vida útil hasta dos veces más prolongada que la de las herramientas convencionales. Excelente precisión dimensional y acabado de las superficies. La eficiencia de mecanizado mejorada permitió una reducción del 30 % de los costes en herramientas.

Eficiencia de mecanizado 1,5 veces mejor que la de los productos convencionales. Vida útil de la herramienta aproximadamente dos veces superior. Corte estable con mínimo ruido y un buen acabado de las superficies. Eficiencia de mecanizado mejorada y vida útil más larga.

1. Los ejemplos anteriores corresponden a aplicaciones de clientes y pueden diferir de las condiciones recomendadas.

SERIE EXCLUSIVA EN FRESAS DE RANURAR



Aplicación de los últimos avances en tecnología, materiales y geometría de fresas.

CLASIFICACIÓN

	DCV3	DCV4	DCV5
Material	P K	P K	P K
Baja resistencia al corte	☉	☉	☉
Dureza	☉	☉	☉
Forma de placa		Vertical	Vertical
ZNF		Placa de doble cara	Placa de doble cara
ZNP	4	4	4
Profundidad máx. de corte media cara	RE ≤ 4.0 mm 8.6 mm	RE ≤ 3.0 mm 12.2 mm	RE ≤ 3.0 mm 16.2 mm
APMX	RE ≥ 3.0mm 11.4 mm	RE ≥ 3.0mm 11.4 mm	RE ≥ 3.0 mm 15.4 mm
Cara entera Max. DC	Ø 300 mm	Ø 400 mm	Ø 660 mm

DCV3 / DCV4 / DCV5

CONDICIONES DE CORTE RECOMENDADAS

FRESADO ESCUADRADO

Material	Dureza	Calidad	Vc	ap	ae	fz	Tipo de corte	
P Acero	≤180HB	MP6120 VP15TF	150 (130-180)	≤APMX	<10%	0.10 (0.08-0.15)		
					<30%			
					≤50%			
				≤2.0	≤50%			0.12 (0.08-0.20)
				≤4.0	<10%			0.12 (0.08-0.20)
P Acero al carbono/ Acero aleado	180-280HB	MP6120 VP15TF	150 (130-180)	≤4.0	<10%	0.10 (0.08-0.15)		
				≤4.0	≤50%	0.10 (0.08-0.15)		
				≤APMX	<10%	0.10 (0.08-0.15)		
				≤APMX	≤50%	0.10 (0.08-0.12)		
				≤2.0	≤50%	0.12 (0.08-0.20)		
K Fundición	Resistencia a la tracción ≤ 350MPa	VP15TF	150 (130-180)	≤4.0	<10%	0.12 (0.08-0.20)		
				≤APMX	<10%	0.10 (0.08-0.15)		
				≤APMX	≤50%	0.10 (0.08-0.12)		
				≤2.0	≤50%	0.12 (0.08-0.20)		
				≤4.0	<10%	0.12 (0.08-0.20)		
K Fundición gris	Resistencia a la tracción ≤ 450MPa	VP15TF	130 (110-160)	≤4.0	<10%	0.10 (0.08-0.15)		
				≤4.0	≤50%	0.10 (0.08-0.15)		
				≤APMX	<10%	0.10 (0.08-0.15)		
				≤APMX	≤50%	0.10 (0.08-0.12)		
				≤2.0	≤50%	0.12 (0.08-0.20)		
K Fundición dúctil	Resistencia a la tracción ≤ 800MPa	VP15TF	130 (110-160)	≤4.0	<10%	0.10 (0.08-0.15)		
				≤4.0	≤50%	0.10 (0.08-0.15)		
				≤APMX	<10%	0.10 (0.08-0.15)		
				≤APMX	≤50%	0.10 (0.08-0.12)		
				≤2.0	≤50%	0.12 (0.08-0.20)		

FRESADO FRONTAL

Material	Dureza	Calidad	Vc	ap	fz	Tipo de corte
P Acero	≤180HB	MP6120 VP15TF	150 (130-180)	≤APMX	0.10 (0.08-0.15)	
				≤2.0	0.12 (0.08-0.20)	
				≤4.0	0.10 (0.08-0.15)	
P Acero al carbono/ Acero aleado	180-280HB	MP6120 VP15TF	150 (130-180)	≤APMX	0.10 (0.08-0.12)	
				≤2.0	0.12 (0.08-0.20)	
				≤4.0	0.10 (0.08-0.15)	
K Fundición	Resistencia a la tracción ≤ 350MPa	VP15TF	150 (130-180)	≤APMX	0.10 (0.08-0.12)	
				≤2.0	0.12 (0.08-0.20)	
				≤4.0	0.10 (0.08-0.15)	
K Fundición gris	Resistencia a la tracción ≤ 450MPa	VP15TF	150 (130-180)	≤APMX	0.10 (0.08-0.12)	
				≤2.0	0.12 (0.08-0.20)	
				≤4.0	0.10 (0.08-0.15)	
K Fundición dúctil	Resistencia a la tracción ≤ 800MPa	VP15TF	130 (110-160)	≤APMX	0.10 (0.08-0.12)	
				≤2.0	0.12 (0.08-0.20)	
				≤4.0	0.10 (0.08-0.15)	



GERMANY

MMC HARTMETALL GMBH
Comeniusstr. 2 . 40670 Meerbusch
Phone +49 2159 91890 . Fax +49 2159 918966
Email admin@mmchg.de

U.K.

MMC HARDMETAL U.K. LTD.
Mitsubishi House . Galena Close . Tamworth . Staffs. B77 4AS
Phone +44 1827 312312 . Fax +44 1827 312314
Email sales@mitsubishicarbide.co.uk

SPAIN

MITSUBISHI MATERIALS ESPAÑA, S.A.
Calle Emperador 2 . 46136 Museros/Valencia
Phone +34 96 1441711 . Fax +34 96 1443786
Email comercial@mmevalencia.es

FRANCE

MMC METAL FRANCE S.A.R.L.
6, Rue Jacques Monod . 91400 Orsay
Phone +33 1 69 35 53 53 . Fax +33 1 69 35 53 50
Email mmfsales@mmc-metal-france.fr

POLAND

MMC HARDMETAL POLAND SP. Z O.O
Al. Armii Krajowej 61 . 50-541 Wrocław
Phone +48 71335 1620 . Fax +48 71335 1621
Email sales@mitsubishicarbide.com.pl

RUSSIA

MMC HARDMETAL OOO LTD.
Electrozavodskaya St. 24 . build. 3 . Moscow . 107023
Phone +7 495 725 58 85 . Fax +7 495 981 39 79
Email info@mmc-carbide.ru

ITALY

MMC ITALIA S.R.L.
Viale Certosa 144 . 20156 Milano
Phone +39 0293 77031 . Fax +39 0293 589093
Email info@mmc-italia.it

TURKEY

MMC HARTMETALL GMBH ALMANYA - İZMİR MERKEZ ŞUBESİ
Adalet Mahallesi Anadolu Caddesi No: 41-1 . 15001 35530 Bayraklı /İzmir
Phone +90 232 5015000 . Fax +90 232 5015007
Email info@mmchg.com.tr

www.mitsubishicarbide.com | www.mmc-hardmetal.com


DISTRIBUIDO POR:

□

□

└

└

Referencia: MP104S | 

Publicado: 2022.04 (0). Impreso en Alemania